



KWT

EN

TRAILED ROTARY TEDDERS

KWT

Trailed rotary tedders

Large choice of trailed KRONE rotary tedders

Page 18

Maintenance-free driveline with eight-finger OctoLink clutch

Maintenance-free driveline with eight-finger OctoLink clutch

Page 4

Hardwearing Super-C tines

Page 7

Setting the angle of throw without tools

for optimum forage quality

Page 8

High operator comfort

For reduced operator strain on long working

Page 24

Special tines for the KRONE combing effect

for cleanest sweeps

Page 7

KRONE border spreading system

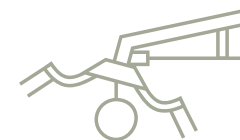
for accurate spreads up to the field edge

Page 9

Maintenance-free gearboxes

liquid-grease lubricated

Page 4



KWT – turns and teds the crop

The trailed KTW tedders cover up to 20 metres even when hitched to a lower-powered tractor. Equipped with their own transport chassis, these machines have a lower tractor power and lift power requirement. Multiple technical details make for safe for road travel and ensure great spreading and conditioning quality in the field.

The KRONE drivelines

Largest work widths and maximum reliability



The eight-finger OctoLink clutch

OctoLink is our extremely hardwearing clutch, which forms a frictional connection at all times and yet requires no attention at all. Some of its eight fingers are always in mesh, even when the rotors are folded through 180 degrees.



The gearboxes

The enclosed liquid-grease lubricated gearboxes that drive the rotors are absolutely maintenance-free. Permanent lubrication gives peace of mind and increases longevity. The chunky box-section chassis absorbs all shock loads on the frame. Mounted beneath the individual sections, the liquid-grease gearboxes drive nothing but the rotors. The same sections guide the rotors on the KW models, which increases the overall stability and takes the load off the gearbox.

KRONE drivelines

■ OctoLink

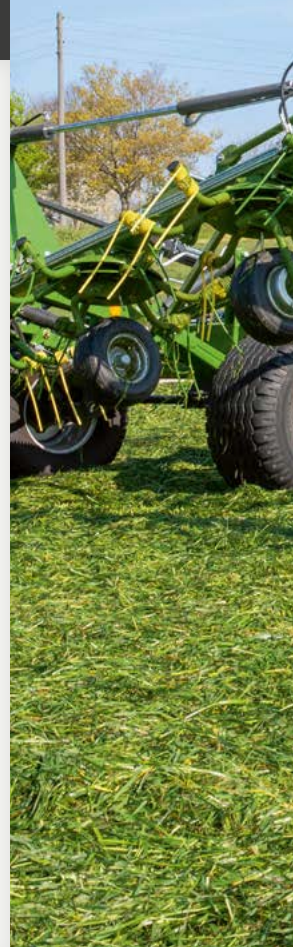
- The maintenance-free eight-finger clutch
- Full drive power in any position

■ Rotor gearboxes

- Maintenance-free and liquid-grease lubricated
- Permanently lubricated for great longevity

When it comes to preparing wilted silage and hay, KRONE is the manufacturer that offers a large and extensive range of high-quality and dependable rotary tedders.

These machines not only deliver high-quality work and feature a high level of standard specification but also boast a host of innovative features including maintenance-free OctoLink clutches and liquid-grease lubricated gearboxes to drive the rotors.





The driveline

The special design of these short fingers and the way they align ensures a consistent flow of power down the driveshafts. There is not a single moment the power flow is cut. This type of driveline translates into maximum efficiency and longevity.



The folding mechanism

With so much free space in the OctoLink system, the outermost rotor segments can be folded in by 180°, reducing transport height and storage space requirement on the one hand while increasing road safety on the other.

The KRONE rotors

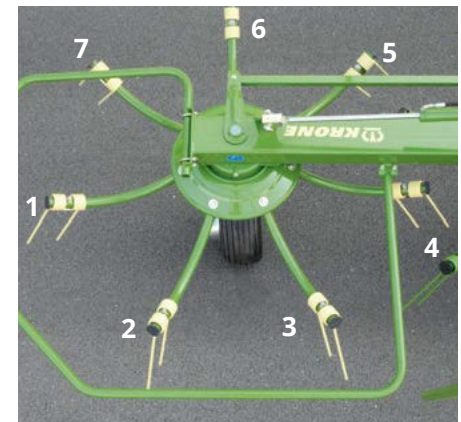
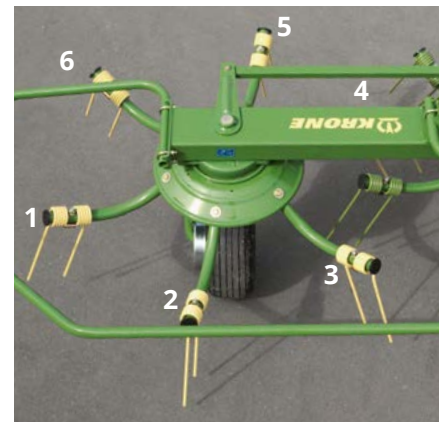
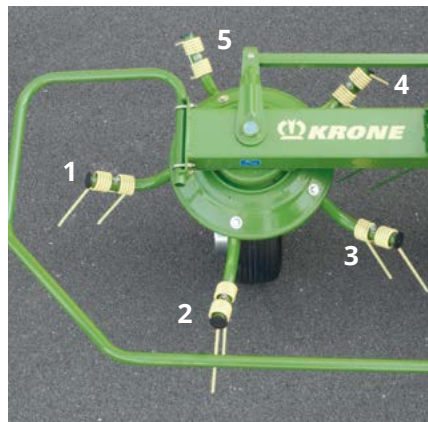
Perfect in every detail

Uniform distribution of the material

The generously overlapping tine arms spread the crop evenly for a uniform spreading pattern in all conditions. Uniform spreads improve wilting and reduce drying times, allowing you to finish the job before weather turns bad.

5, 6 or 7 tine arms

The KRONE KW and KWT rotary tedders are available in various work widths and dimensions. But also the rotor diameters and the number of tine arms on each rotor vary to suit your special needs and requirements. With five tine arms on the small diameter rotor (1.34m), six on the medium-sized rotor (1.53m) and seven on the largest (1.70m/1.80m) rotor, KRONE offers the perfect rotary tedder for every user, every situation and every need.





Forage harvesting the professional way

- **Sturdy tubular tine arms**
- **Uniform crop spread as the tine arms overlap generously**
- **Heavy-duty, hardwearing 9.5 mm Super C double tines** with 5 coils
- **Tines with different leg lengths** for the KRONE combing effect

Quality requires us to start with the basics. This is how we achieve high standards. The rotors on the KRONE rotary tedders are the ideal equipment to produce quality forage for on-farm use. Whether you're producing hay or silage, these rotors deliver every time.



Leg length

The Super-C-tine legs are unequal in length to give the special KRONE combing effect and optimum tedding without contaminating the crop. Having five coils, the spring steel tines are flexible and can handle high loads. This design ensures the material is picked up accurately and without contamination and continues to reduce losses even after many years of work.



The tine control system

The tines are attached to the tine arms with an eccentric plate and adjust to one of three sweeping angles – an option that makes for excellent tedding in all conditions.

The tine arm attachment

Heavy-duty tine arms (38x4mm tubular steel) and a special ring attachment system combine to provide dependable performance in even the toughest conditions.

The guarantee for top-quality forage

Optimal treatment



Tedding at a steep angle, turning at a shallow angle

Choice of four spreading angle positions between 13° and 19° by refitting a pin in a hole pattern on the wheel arms. No tool required. The steep spreading angle is perfect for tedding, producing intensively conditioned forage. With its gentler conditioning action, the shallow angle is better when making the headland turn.



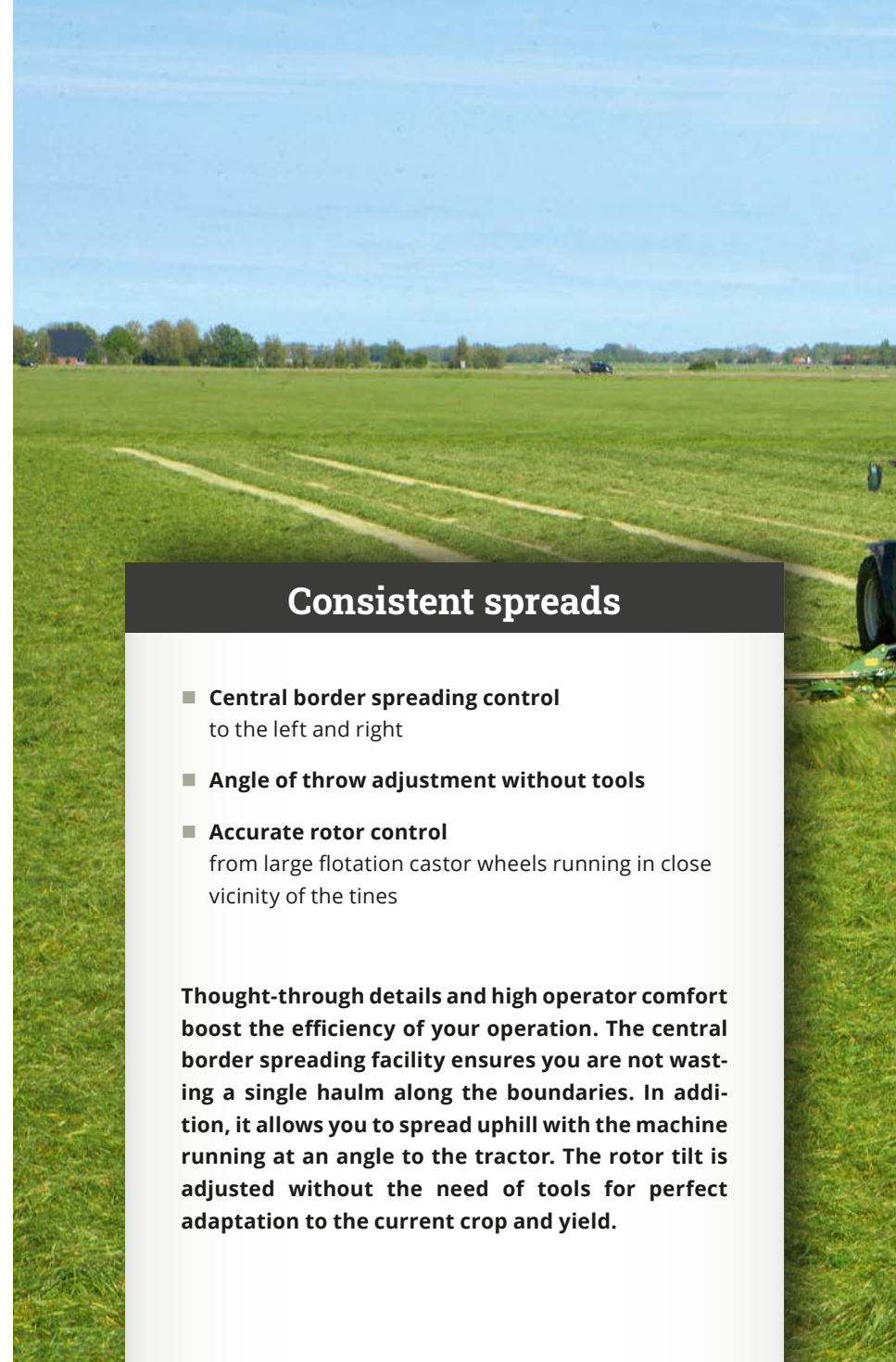
The tyres on the rotors

Clad with big flotation tyres (16x6.50-8 und 18x8.50-8), the wheels give perfect castering and quiet running for light-pulling and sward protection. Running in close vicinity of the tines, they give optimum control and contouring.



Anti-wrap guards

Anti-wrap guards come as standard on KRONE rotary tedders, keeping the wheels and arms free from crop halms and ensuring problem-free operation.



Consistent spreads

- **Central border spreading control**
to the left and right
- **Angle of throw adjustment without tools**
- **Accurate rotor control**
from large flotation castor wheels running in close vicinity of the tines

Thought-through details and high operator comfort boost the efficiency of your operation. The central border spreading facility ensures you are not wasting a single haulm along the boundaries. In addition, it allows you to spread uphill with the machine running at an angle to the tractor. The rotor tilt is adjusted without the need of tools for perfect adaptation to the current crop and yield.



Stable casting

All the running wheels are connected to each other via the border spreading control linkage, ensuring stable casting for uphill work and uniform spreads on steep slopes.



The hydraulic border spreading system

The hydraulic border spreading system is controlled from the tractor seat. The running wheels are turned by a central hydraulic ram on the border spreading control linkage. The hydraulic option is particularly convenient for spreading uphill on slopes and preventing the tedder from drifting off-course.

KW 5.52 T · KW 7.82 T

Trailed four/six-rotor machines (export)



The articulated drawbar

The KW 5.52 T and KW 7.82 T feature a height-adjustable articulated drawbar. Coupled to a rigid drawbar or with a floating drawbar – quick and easy.



The transport position

The hydraulic drawbar provides for plenty of ground clearance under the rotors when the machine is travelling to the next site. When using the swinging drawbar or the rigid linkage drawbar, work depth is set on the turnbuckle on the hydraulic ram.



Extremely heavy-duty

- 5.50 m - 7.80m work widths
- Minimum input requirement
no load taken off the tractor's front axle
- Easy tractor attachment and removal
- Convenient hydraulic articulated drawbar

The trailed rotary tedders for 5.50 m and 7.80 m widths stand out for their low tractor input requirement. Running on the middle wheels when in transport, the machine does not mount in the tractor's three-point linkage – which is ideal for smaller tractors with lower front axle load and lift capacities.



The border spreading facility

The border spreading facility ensures no crop is lost along the field boundaries. Move this lever to the left or right to direct the crop to that specific side.

The storage position

KW 5.52 T and KW 7.82 T are very compact models which require little storage space. Parked on large balloon tyres and a steplessly adjustable stand on the drawbar, the trailed models offer unsurpassed stability.

Adjusting the angle of throw

Adjusting the angle of spread is important to adapt the machine optimally to the desired quality of the forage. The wheel arms are adjusted simply by moving an extension lever, which is possible because KW 5.52 and KW 7.82 T are not lifted out.



KWT 7.82 · KWT 8.82 · KWT 11.22

Trailed tedders with 6, 8 or 10 rotors or a transport chassis



Uniform spreads

- 7.80 m - 11.00 m work widths
- Sequence control for maximum operator comfort
- Wide transport running gear with large wheels for 40 km/h
- Pivoting running gear for enhanced weight distribution

The transport running gear makes these rotary tedders ideal for smaller tractors with smaller lift capacities despite their wider working width.

The working position

In the field, the running gear is up, which leads to a balanced distribution of the overall machine weight and hence to a perfect and uniform spread across the full work width. All clear for the rotors.

The tyres

Large 10.0/75 - 15.3 tyres on the transport running gear give quiet running and stability in rough and bogie terrain as well as when travelling at 40 km/h to the next site.





The transport running gear

The KWT 7.82 and KWT 8.82 running gears lift and lower via two single-acting and accumulator dampened rams whereas the KWT 11.22 is operated by two double-acting rams.

The toothed segments

The toothed wheels support the hydraulic rams and increase the transport running gear's forward swivel range for enhanced weight distribution during headland turns.

KWT 7.82 · KWT 8.82 · KWT 11.22

Further technical details



Tractor attachment

Attachment to the tractor is via a two-point hitch, which avoids damage to the driveshaft should the link arms be raised accidentally. The foldable stand locks home automatically.

The V-frame

The KWT with transport running gear is pulled by a sturdy v-frame. The design and the wide-angle driveshaft on the pivoting headstock make for tightest headland turns.

Ground contouring

The pivoting two-point headstock floats in its mountings to adapt to all ground contours, preventing any torsional force from developing and acting on the frame.





The pivoting drawbar

As the swinging drawbar is the preferred tractor attachment in a number of countries, we offer the trailed rotary tedder KWT 8.82 DB with a height-adjustable swinging drawbar for customers in these specific countries.

The drawbar

The sturdy drawbar is designed like a V to cope with even the harshest conditions. Which makes for easy and fast attachment and removal. The stand is steplessly adjusted to the tractor's linkage or the linkage drawbar.

The work height

As the work height is controlled by the drawbar, this is adjusted steplessly from a crank.



KWT 7.82 · KWT 8.82 · KWT 11.22

Further technical details



The tyres on the rotors

Running on 18x8.50-8 tyres, the wheels under the central rotors are larger in size to carry the transport running gear in the field. The wider tyres protect the sward and give quiet running.



The leading jockey heel

The KWT models are available with optional wheels that run ahead of the unit. Trailing freely in close vicinity to the tines and giving stepless height-adjustment, these wheels deliver absolutely clean sweeps trailing freely and giving stepless height-adjustment.



The border spreading facility

The hydraulic border spreading system for left/right spreading is a standard feature on KWT 7.82, 8.82, and 11.22. This system guarantees no crop is lost on the boundary and you harvest the full yield.





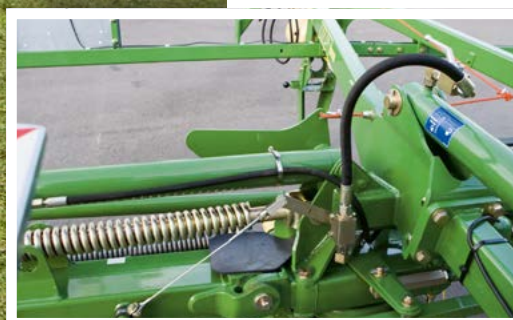
The hydraulic reverser

The reversing valve on the models KWT 7.82 and KWT 8.82 activates the hydraulic border spreading system, swinging the transport running gear up and down and the rotors in and out.



The electric reverser

The KWT 11.22 is operated via two double-acting tractor spools. An electric reversing valve is an option that allows the machine to be operated from only one single-acting spool.



The auto-sequenced folding system

Conversion from transport to work position and vice versa is very convenient thanks to sequence control, which orchestrates the folding sections and the pivoting running gear.

KWT 1300 · KWT 1600 · KWT 2000

Trailed 12/14/18-rotor machines

Enormous area outputs

- **13.10 m to 19.60 m working width**
- **Optimum spread pattern**
from small-diameter rotors
- **Heavy-duty beams**
- **Maintenance-free OctoLink rotor drives**
- **Intelligently steered**
KWT 1600 and KWT 2000

Making quality forage not only requires high-capacity mowers but also the right tedder. In terms of work rates, the KWT 1300, KW 1600 or KWT 2000 is the perfect match for a high-capacity mower combination. It allows you to do the tedding pass in parallel with the mowing pass to achieve uniform wilts.

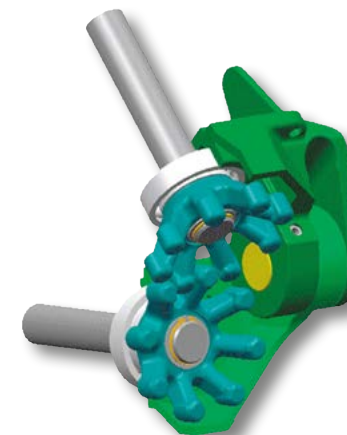


KWT 1600



High productivity and quality of work

The trailed rotary tedders KWT 1300, 1600 and 2000 stand out for an impressive efficiency and the best quality of work. 12, 14, or 18 rotors spread the crop in an extremely uniform mat. The flexible tubes ensure the material is adequately teded even across the full work width and in undulating fields. Permanently lubricated rotor gearboxes, robust 9.5 mm double tines of unequal lengths, robust tube-section tine holders, a sturdy frame with individual segment adjustment and a wide transport chassis running on flotation tyres – all this combines to cope with highest loads and deliver excellent results on and on.



OctoLink finger clutches

Featuring maintenance-free eight-finger clutch and rotor gearboxes that are immersed in semi-fluid grease, the KWT 1300, KWT 1600 and KWT 2000 are made to cope with the highest loads and continue delivering during a long life.



Rotor diameter

The 1.53 m diameter rotors with six tine arms and robust double tines of unequal lengths produce an exemplary spread pattern.

KWT 1300 · KWT 1600 · KWT 2000

Further technical details



Sturdy frames

High-strength beams are made to cope with the strains of a huge work width. The enclosed hoop guard features cross braces that are arranged at an angle for extra stability. The heavy-duty build not only complies with safety standards but also takes off load from the side arms and joints.

Compensating for the loading

The coil spring connects the top link coupler with the transport frame. When the rotors are in headland position the spring is pressing on the frame, compensating for negative tongue load. This detail allows you to operate a KWT 1300, KWT 1600 or KWT 2000 also with a smaller or more lightweight tractor.

Work height control

The height of all tines is altered on this crank in the middle of the machine for quick and easy adjustment to varying conditions.

Border spreading with curtain

The curtain is controlled hydraulically and is an option for those who seek maximum precision in border spreading. The crop is not thrown beyond the field border.





KWT 1300

Automatic folding

Both the KWT 1300 and the high-capacity KWT 1600 and KWT 2000 models fold automatically and sequence controlled from the cab thereby eliminating any risk of operator error. As a last step, a separate spool raises / lowers the booms into headland / work position.

The transport running gear

The wide transport running gear ensures quiet running and good road stability even on rough roads. Wider tyres are an option here, because flotation rubber on the transport chassis translates into softer treading in boggy terrain and reduced soil compaction thanks to a large contact area.



KWT 1300 in headland position



KWT 1600 and KWT 2000 in headland position



KWT 1300

Further technical details



The attachment systems

KWT 1300 is available in many different attachment systems. The standard attachment is a drawbar with 40 mm hitch ring for top and bottom attachment. An 80 mm hitch ball or a pivoting drawbar is an option. The KWT 1300 Plus comes with a three-point headstock as standard for great agility during tight manoeuvres and headland turns.

Accurate guidance

The bottom arms on the chassis give very accurate guidance of the rotors. The wheels on the transport running gear are simply castoring, serving as a leading gauge wheel for active tine contouring control.





The hydraulic top link

The hydraulic top link is in float position during work providing optimum ground contour following and maintaining the set work height. On the headland and changing in transport position, the link raises the entire frame into an approx. 90° position.

Clean and gentle rakes

- Huge 13.10 m work width
- 12 rotors with 6 tine arms each
- Drawbar or three-point linkage attachment
- Automated transport/work changeovers
- Flexible rotor guidance, exact ground contouring

The KRONE KWT 1300 is the tedder for supreme quality forage. Pleasant to operate, The machine teds 13.10 m in one operation. Highly productive, it is yet gentle on the crop and soil but compact and safe in road travel.



Hydraulic suspension for the transport axle

The transport axle on KWT 1300 Plus has standard hydraulic suspension. This is an option on the KWT 1300. In headland position, KWT 1300 (Plus) rests most of its weight on the transport axle (top photo) for good tracking and stability during the headland turn. By comparison, when in working position, the lift cylinder transfers the weight of the frame and axle from the transport axle. Much of the axle and frame weight is distributed to the rotor wheels and the drawbar (see the photo below). This reduces the load on the transport wheels and hence the risk of scuffing in tight turns. The functionality of the gauge wheel is maintained also when weight is taken off them. a smart design that cuts out damage to the sward and crop contamination.



KWT 1600 - KWT 2000

Further technical details

Steered wheels

- **Steered transport running gear** with automatic steering mode control
- **Compact on the road** and wide in the field
- **The manual working height control**
- **Contouring control independent of the running gear**

In road travel, the KWT 1600 and KWT 2000 impress with a narrow transport width of less than 3 m whereas in work they offer a stunning work width of 15.27 m to 19.60 m. The machine also stands out for easy handling and functionality during changeovers, as automatic sequence control reduces driver effort and increases daily outputs.



Safe travel on the road

High-reflective, single-piece side guards combine with effective lighting to increase road safety at night when entering roads or crossing traffic junctions.

The hydraulic lift

The rotors are lifted hydraulically by a lifting linkage for transportation or at headland turns with an impressive lift-out height.



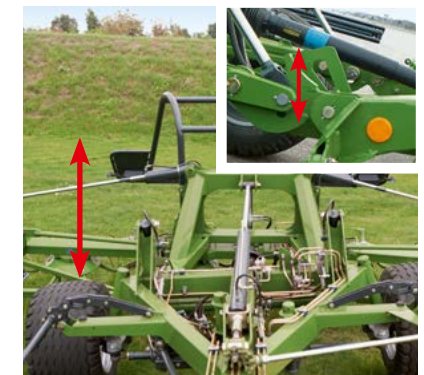
The hydraulic top link

The hydraulic top link consistently maintains the set work depth. Its task is to tilt the individual sections and the rotors forward by 90° into the transport position.



Ground contouring

Double joints on the frame and elongated holes on the lower lift arms ensure the machine follows contours flexibly and unrestrictedly by the transport chassis – a design that ensures clean work also in undulating fields.





KWT 2000

The forced steering system

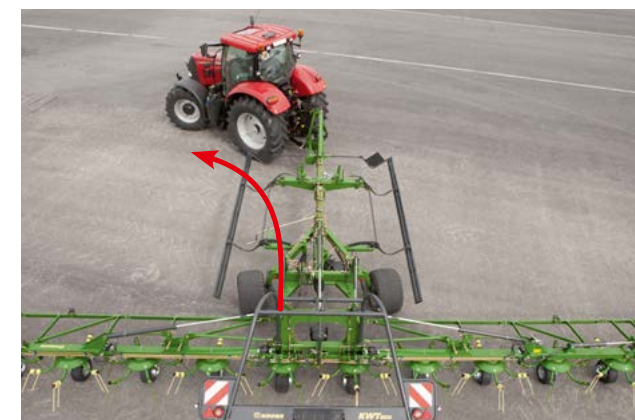
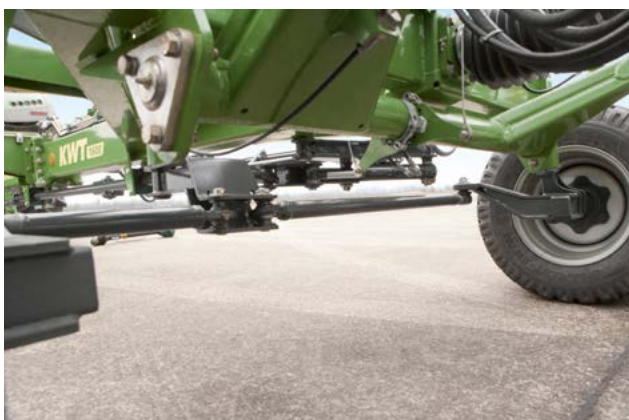
The caster-steer KWT 1600 and KWT 2000 tedders have a forced-steering system that is implemented by the three-point headstock. By refitting the steering linkage the track width of the transport axle is automatically altered to match the tractor wheelings or rotor wheels. This is made automatically and sequence controlled when the machine moves into transport, headland or working position.

Tracking behind the tractor

The wheels on the transport running gear run in the tractor wheelings whenever the machine is in transport or headland position. This is the optimum configuration for managing narrow gates and headlands.

Following the rotor wheels

In working position, the wheels on the transport running gear are steered relative to the rotor wheels to match their turning circle. This prevents all wheels from scuffing during a turn, protects the sward and makes for easier tedding along curved border lines.



Optional specifications

Expanding your choice



The free-running clutch

The optional free-running clutch on the main driveshaft is useful on machines up to 6.70 m in width. It is operated by a tractor with pto brake, where it offers maximum safety when shutting off the machine.



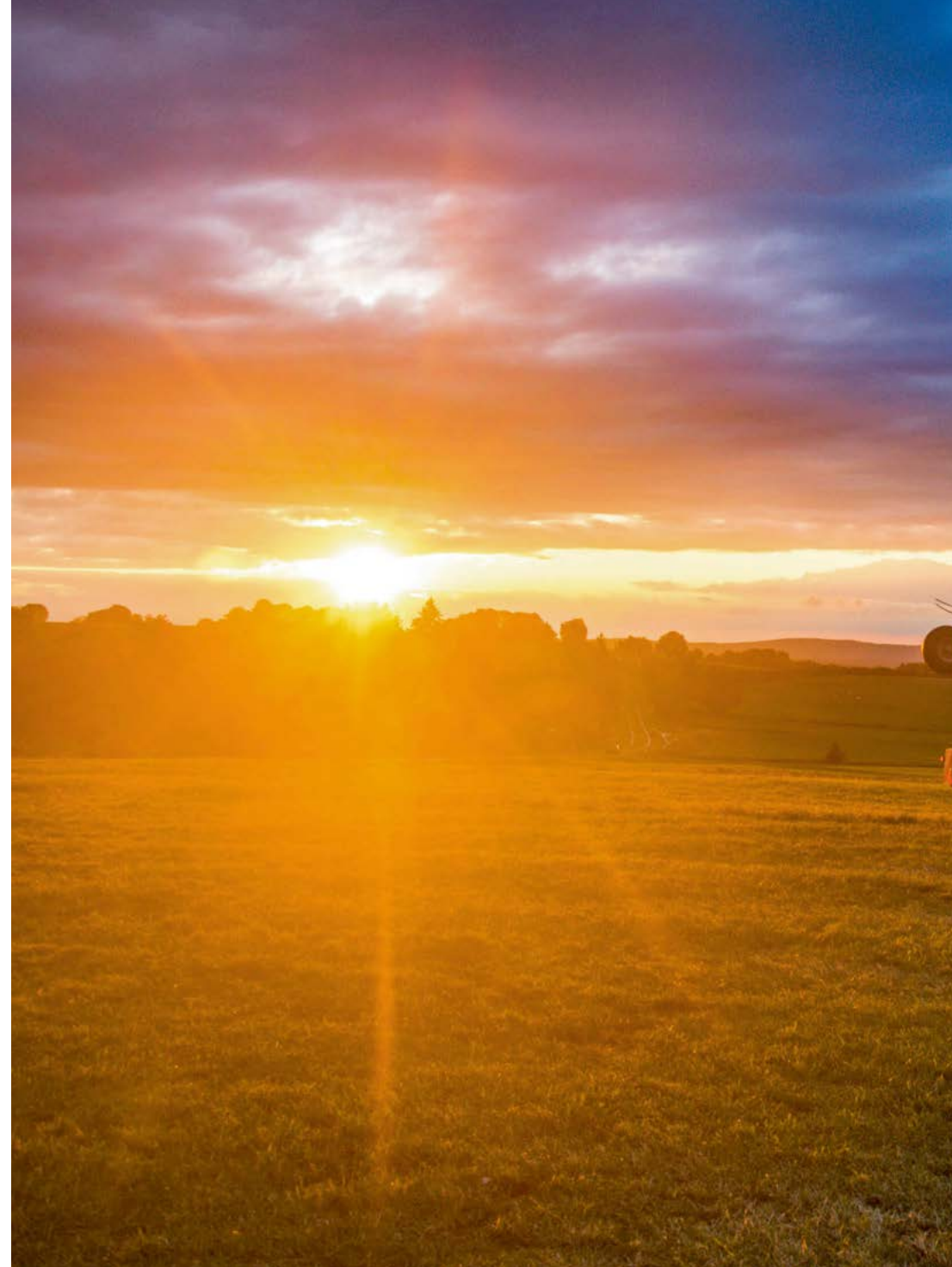
The spare wheels

16x6.50-8 or 18x8.50-8 spare wheels are available as an option. Stored on a holder supplied with the wheel, the spare wheel is easy to remove without tools.



The anti-wrap guards

Optional plates are available for attachment to the wheel holders that protect the wheels from wrapping sticky forage.





The night swath gearboxes

Some farmers prefer making narrow swaths for the night to avoid the crop is absorbing less moisture during the night. This optional gearbox is simply pushed on the shaft and reduces the rotor speed to produce narrow night swaths.

Improving the feed quality

In some situations the standard machine specification may not produce optimum results. Therefore KRONE offers a number of options for our rotary tedders that ensure your machine delivers maximum outputs and top forage quality in special conditions.

Which working widths go together?

Front or rear mowers (2.40 m to 6.00 m)



You get optimum results when one swath is agitated by two rotors and when the tractor is not running on the swaths.

No. of rotors					12	14	18
No. or arms/rotor		7	6	6	6	6	6
Model		KWT 7.82/6x7	KWT 8.82/8	KWT 11.22/10	KWT 1300	KWT 1600	KWT 2000
Front or rear mowers							
AM 243 S ActiveMow R 240 AM 243 CV	2.4 m width (7'11")						
ActiveMow R 280 EasyCut F 280 M EasyCut F 280 EasyCut 28 CV EasyCut R 280 EasyCut R 280 CV EasyCut R 280 CR EasyCut 2800 CRi	2.8 m width (9'2")						
ActiveMow R 320 EasyCut F 320 M EasyCut F 320 EasyCut F 320 CV EasyCut F 320 CR EasyCut R 320 CV EasyCut R 320 CR EasyCut 3200 EasyCut 3201 CV EasyCut 3200 CRi EasyCut 3210 CV EasyCut 3210 CRi	3.2 m width (10'6")						

No. of rotors			10		12	14	18
No. or arms/rotor	7	6	5	6	6	6	6
Model	KWT 7.82/6x7	KWT 8.82/8	KWT 10.02/10	KWT 11.22/10	KWT 1300	KWT 1600	KWT 2000
Front or rear mowers							
EasyCut F 360 M EasyCut F 360 EasyCut F 360 CV EasyCut F 360 CR	3.6 m width (11'10")						
EasyCut R 360	3.6 m width (11'10")						
EasyCut 400	4.0 m width (13'2")						
EasyCut 6210 CV	6.0 m width (19'8")						



Which working widths go together?

Mower combinations (5.00 m to 10.10 m)



No. of rotors				12	14	18	
No. of arms/rotor		7	6	6	6	6	
Model		KWT 7.82/6x7	KWT 8.82/8	KWT 11.22/10	KWT 1300	KWT 1600	KWT 2000
Front or rear mowers							
2.8 / 2.8	5.0 m width (16'5")						
2.8 / 3.2	5.6 m width (18'5")						
3.2 / 3.2	6.0 m width (19'8")						
3.2 / 3.6	6.5 m width (21'4")						
3.6 / 3.6	6.0 m width (22'12")						

No. of rotors				12	14	18
No. of arms/rotor	7	6	6	6	6	6
Model	KWT 7.82/6x7	KWT 8.82/8	KWT 11.22/10	KWT 1300	KWT 1600	KWT 2000

Triple mower combinations

EasyCut B 750 2.8/2.8/2.8	7.5 m width (24'7")						
EasyCut B 870 CV EasyCut B 890 3.2 / 3.2 / 3.2	8.7 m width (28'7")						
EasyCut B 970 EasyCut B 1000 CV 3.6 / 3.2 / 3.6	9.6 m width (31'6")						
EasyCut B 970 EasyCut B 1000 CV 3.6 / 3.6 / 3.6	10.1 m width (33'2")						

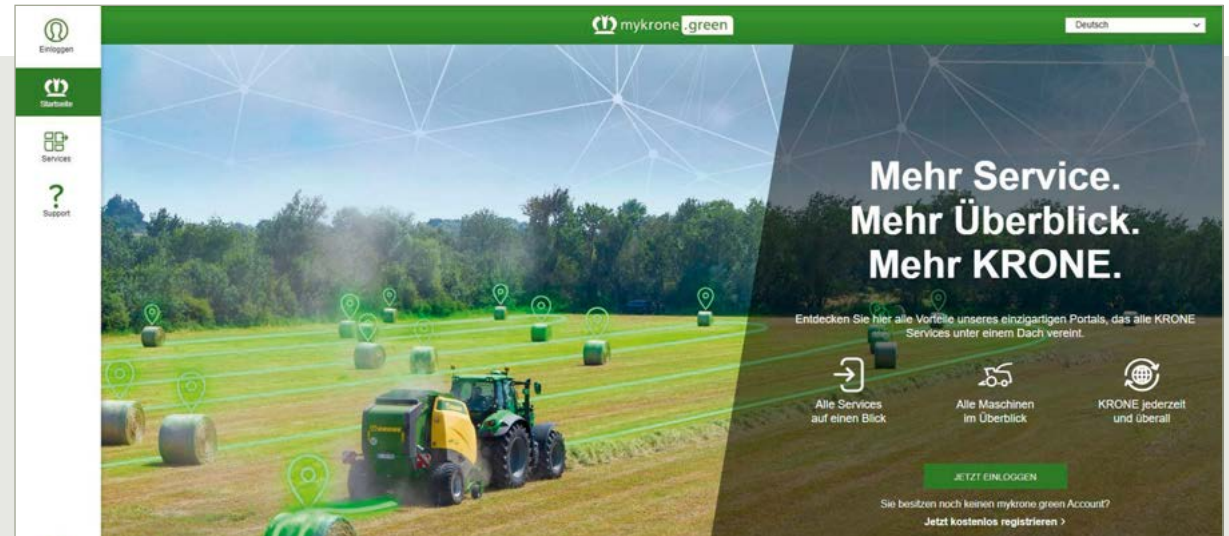




Would you like to have all your **KRONE** machines and all **KRONE** services listed at a glance? **No problem, the solution is simple!** Create your personal account at **mykrone.green** and benefit from a new approach that makes you more efficient and organised.

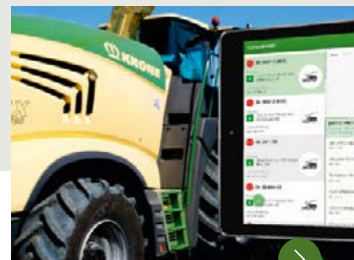
How does it work?

At the bottom of this page you find some of the few pillars that form part of the **KRONE** world, but of course these are not all. If you would like more information, please contact your sales partner or us directly – we will be happy to offer advice!



E-SOLUTIONS

Would you like to opt into **KRONE SectionControl** or extra engine power or a special software solution? And preferably instantly? No problem with the E-Solution Shop! With a simple click of your mouse, you can opt into an extra machine feature on conditions that work best for your farm!



SMART TELEMATICS

KRONE Smart Telematics for fleet managers to access and 'read' a machine. Keeping them on top of what's going on in the harvest chain without having to make a single phone call. Also, the tractor drivers will have exact information on where to find the forage harvester.



TRAINING

Qualification and continuous training of drivers and service staff are the pillars of your success in a world where customer demands increase and technology advances.



PARTS CATALOG

The only way to maintain the top quality of your machine is to obtain parts **from the original manufacturer**. At Agroparts, you will find up-to-date and detailed parts catalogues on your **KRONE** machine – conveniently on the Internet.



Technical data

Trailed rotary tedders



		KW 5.52/4x7 T	KW 7.82/6x7 T	KWT 7.82/6x7	KWT 8.82/8	KWT 11.22/10	KWT 1300	KWT 1600	KWT 2000
Work width to DIN 11220	m	5.50 (18'11")	7.80 (25'7")	7.80 (25'7")	8.80 (28'11")	11.00 (36'1")	13.10 (42'12")	15.30 (50'2")	19.60 (64'4")
Area output	approx. ha/h	5.5 (13.6)	7.8 (19.3)	7.8 (19.3)	8.8 (21.7)	11 (27.2)	13 (32.1)	15 (37.1)	18-20 (44.5-49.4)
Transport width	m	2.98 (9'9")	2.98 (9'9")	2.98 (9'9")	2.98 (9'9")	2.98 (9'9")	2.98 (9'9")	2.98 (9'9")	2.98 (9'9")
Storage height	m	2.68 (8'10")	3.13 (10'3")	3.64 (11'11")	3.53 (11'7")	3.70 (12'2")	2.45 (8'1")	2.77 (9'1")	2.77 (9'1")
Tractor power	min. kW/hp	18/25	37/50	37/50	37/50	40/55	51/70	60/80	80/110
Weight	Approx. kg (lbs)	680 (1,499)	1,030 (2,271)	1,280 (2,822)	1,480 (3,263)	1,510 (3,329)	2,750 (6,063)	3,490 (7,694)	4,860 (10,714)
No. of rotors		4	6	6	8	10	12	14	18
No. of tine arms per rotor		7	7	7	6	6	6	6	6
Rotor diameter	m	1.80 (5'11")	1.70 (5'7")	1.70 (5'7")	1.53 (5'0")	1.53 (5'0")	1.53 (5'0")	1.53 (5'0")	1.53 (5'0")
Tyres on the rotors		18x8.50-8	18x8.50-8	16x6.50-8	16x6.50-8	16x6.50-8	16x6.50-8	16x6.50-8	16x6.50-8
		-	-	18x8.50-8 (middle)	18x8.50-8 (middle)	18x8.50-8 (middle)	18x8.50-8 (middle)	18x8.50-8 (middle)	18x8.50-8 (middle)
Tyres on transport chassis		-	-	10.0/75-15.3	10.0/75-15.3	10.0/75-15.3	11.5/80-15.3 (15.0/55-17)	19.0/45-17 10 PR (500/50-17 10 PR)	500/50-17 149 A8 (550/45-22.5)
Pulled		Swinging drawbar	Swinging drawbar	Tractor link arms	Tractor link arms (swinging drawbar)*	Tractor link arms	Pin hitch (standard) Kugelkopfanhängung 3-point attachment	3-point attachment	3-point attachment
Border spreading		Mechanical	Mechanical	Hydraulic	Hydraulic	Hydraulic	Curtain	Curtain	Curtain
Attachment category		18x8.50-8 -	18x8.50-8 -	Cat. I/II	Cat. I/II	Cat. I/II	Cat. II	Cat. II	Cat. II
Hydraulic spools		1 sa	1 sa	1 sa	1 sa	2 da	1 sa, 1 da	1 sa, 1 da	1 sa, 1 da
Spreading angle		13° - 19°	13° - 19°	13° - 19°	13° - 19°	13° - 19°	13° - 19°	13° - 19°	13° - 19°
Brake system	Air hydraulic	- -	- -	- -	- -	- -	- -	Option/Option	Standard Option





Maschinenfabrik Bernard KRONE GmbH & Co. KG
Heinrich-Krone-Straße 10
D-48480 Spelle
Phone: +49 (0) 5977 935-0
info.ldm@krone.de | www.krone-agriculture.com

Your KRONE dealer